

## MODEL 76M STAINLESS STEEL MEDIUM PRESSURE FLEXIBLE COUPLING

The Model 76M is designed for medium pressure reverse osmosis systems. The 76M is supplied standard in CF8 (304) and CF8M (316), CD3MN (2205), CE8MN, CE3MN (2507) with 304 or 316 bolts and nuts.

### Sizes-Inches/DN

¾" to 8" (DN20 to DN200)

### Rated Working Pressure:

600psi (42 bar) Sch40S, cut groove only

### Material Specifications

Housings:

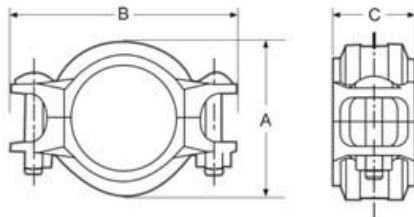
- Type 304 stainless steel to ASTM A351 CF8 or A743 Gr. CF8
- Type 316 to ASTM A743 CF8M
- Type 316L to ASTM A743 CF3M
- CE8MN to ASTM A890 Grade 2A
- Austenitic 904L (CN2MCuN) to A351
- Duplex 2205 (CD3MN) to ASTM A890 Grade 4A
- Super Duplex 2507 (CE3MN) to ASTM A890 Grade 5A
- Austenitic 254SMO (CK3MCuN) to A743

### Rubber Gaskets:

The gasket seal is C-shaped, made of standard gasket EPDM (ethylene propylene diene monomer) for cold water, hot water, rare acid, oil-free air and multiple chemical product (-50 – 150°C). It is not suitable for mediums like petroleum.

### Bolts & Nuts:

- Type 304 stainless steel track bolts and nuts to ASTM F-593
- Type 316 stainless steel track bolts and nuts to ASTM F-593
- Type 316 stainless steel track bolts ASTM A-193 B-8M with silicone bronze heavy duty nuts to ASTM B98 C65100



Nominal Size	Pipe OD	Rated Working Pressure	Pipe End Separation	Dimensions			
				A	B	C	Weight
mm / in	mm / in	psi / bar	mm / in	mm / in	mm / in	kgs / lbs	
20	26.900	600	0-1.6	48.000	81.000	42.000	0.295
0.75	1.059	41.34	0-0.06	1.890	3.189	1.654	0.649
25	32.000	600	0-1.6	55.000	89.000	42.000	0.310
1	1.260	41.34	0-0.06	2.165	3.504	1.654	0.682
25	33.700	600	0-1.6	55.000	89.000	42.000	0.341
1	1.327	41.34	0-0.06	2.165	3.504	1.654	0.751
32	38.000	600	0-1.6	59.000	97.000	44.000	0.320
1.25	1.496	41.34	0-0.06	2.323	3.819	1.732	0.704
32	42.400	600	0-1.6	64.000	99.000	43.000	0.438
1.25	1.669	41.34	0-0.06	2.520	3.898	1.693	0.965
40	48.300	600	0-1.6	71.000	109.000	43.000	0.574
1.5	1.900	41.34	0-0.06	2.795	4.291	1.693	1.263
50	57.000	600	0-1.6	80.000	121.000	44.000	0.620
2	2.244	41.34	0-0.06	3.149	4.764	1.732	1.364
50	60.300	600	0-1.6	83.000	121.000	44.000	0.645
2	2.375	41.34	0-0.06	3.268	4.764	1.732	1.419
65	73.000	600	0-1.6	95.000	130.000	45.000	0.799
2.5	2.875	41.34	0-0.06	3.740	5.118	1.772	1.758
65	76.100	600	0-1.6	100.000	135.000	45.000	0.836
2.5	3.000	41.34	0-0.06	3.937	5.315	1.772	1.840
80	88.900	600	0-1.6	112.000	155.000	45.000	1.047
3	3.500	41.34	0-0.06	4.409	6.102	1.772	2.304
100	108.000	600	0-3.2	135.000	186.000	48.000	1.455
4	4.250	41.34	0-0.13	5.315	7.323	1.890	3.201
100	114.300	600	0-3.2	145.000	185.000	48.000	1.560
4	4.500	41.34	0-0.13	5.709	7.283	1.890	3.432
125	133.000	600	0-3.2	161.000	201.000	52.000	1.665
5	5.250	41.34	0-0.13	6.339	7.913	2.047	3.663
125	139.700	600	0-3.2	170.000	217.000	52.000	1.520
5	5.500	41.34	0-0.13	6.693	8.543	2.047	3.344
125	141.300	600	0-3.2	170.000	220.000	52.000	1.830
5	5.563	41.34	0-0.13	6.893	8.661	2.047	4.026
150	159.000	600	0-3.2	193.000	244.000	52.000	2.160
6	6.259	41.34	0-0.13	7.598	9.606	2.047	4.752
150	168.300	600	0-3.2	202.000	267.000	52.000	2.530
6	6.625	41.34	0-0.13	7.953	10.512	2.047	5.566
200	219.100	600	0-3.2	264.000	319.000	60.000	4.586
8	8.625	41.34	0-0.13	10.394	12.559	2.362	10.090